



Weekly E-News from Grace Episcopal Church

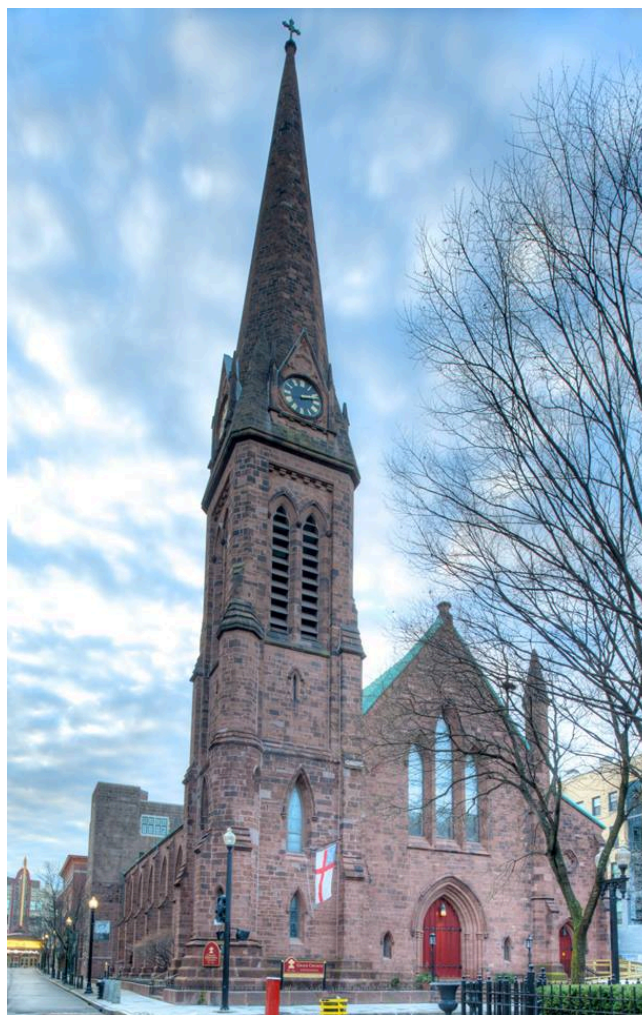
August 17, 2017

## Spotlight on Grace: What's in a Name?

There are five Episcopal churches in the city of Providence, and they carry the names of the following: Saint Stephen, Saints Andrew & Peter, Saint Martin, all the saints, and the Redeemer (Christ) himself. Only one church - ours - is named, not for a person, but for an experience: Grace.

Why would our predecessors have chosen to name our parish, not for a saint or Christ or the Holy Trinity, but Grace? What does "grace" even mean? The word "grace" has multiple meanings, and can be both a noun and a verb (as in, "She graced us with her presence.") In the Christian sense of the word, grace means the blessings of God that come to us (such as love, forgiveness, and the desire and strength to serve Christ in this world), not because of anything we have done to deserve them, but because of God's love for us.

Of course, much more than that has been written about the grace of God over the centuries by countless Christians, and since I've never seen a document attesting to why the founders of our parish named this church "Grace," I couldn't say what it was, in particular, about grace that so moved them. I suppose it may have been



that, when you come right down to it, everything that we have in this life comes to us by the grace of God. And so perhaps naming our church "Grace" was an act of deep thanksgiving. And giving thanks is what draws us back to Grace every Sunday.

Jonathan+

---

## This Week at Grace

### Weekly Worship Schedule:

Sunday 8:00am Holy Eucharist  
Sunday 10:00am Holy Eucharist with Music  
Wednesday Noon Holy Eucharist

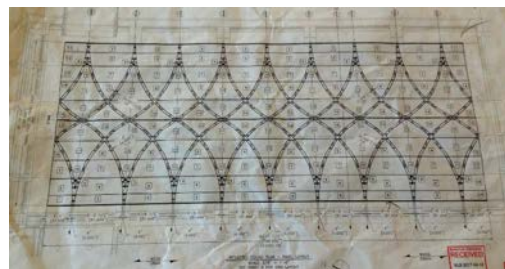
**Prayer Group:** Meets the 2nd and 4th Saturday of each month at 9:30am, Chafee Room.

**Open Doors:** Your friendly docents are here to greet you every weekday from 11:00am to 2:00pm. During the summer, Open Doors will be Monday through Thursday.

**Wheelchair Access and Accessible Parking:** Please find wheelchair access from the sidewalk on Westminster Street into the church. Handicapped parking spaces have been posted for Sundays on Mathewson Street near Westminster.

**Parking for Worship:** Free parking for Sunday worship is provided in the lot diagonally across Westminster Street, on the NW corner of Westminster and Snow. Additional free parking is also available on the top level only of the PPAC parking garage, for which the entrance is on Weybosset Street. A stairway from the top level leads right to Chapel Street across from the church. A small number of spaces are available on the portion of the Grace Church lot facing Snow Street, along an inset section of the construction fence. For all other times, please [check with the parish administrator](#) for availability.

---



Architectural plan for patterned ceiling panels. The darker lines represent spaces between the shaped panels.

## Back to School Supply Drive for Children's Friend

*YOU* can help send a vulnerable child to school ready to learn! Please support the Outreach Ministry's 2017 Back to School Supply Drive for Children's Friend. Needed items include: construction paper, children's books, writing paper, glue sticks/craft glue, crayons, popsicle sticks, pencils, small backpacks, washable markers, glitter, tempera paints, watercolor paint sets, paint brushes, preschool size scissors, etc. Donations will be collected each Sunday through September 10th, and can be left in the collection box at the back of the church.



---

## Sing with the Summer Choir

**Summer Choir is in session:** Summer Choir is open to anyone who sings with the Grace Church Choir, or anyone who would like to try singing in the choir. We meet in the Choir Room at 9:00 AM on Sunday mornings, rehearse the hymns and psalm, and prepare a simple anthem or two. You don't need to give previous notice, but if you would like to try Summer Choir, please do [email Vince Edwards](mailto:vince.edwards@gracechurch.org), Director of Music, for more information, or if you have any questions. Feel free to sing one Sunday, or every Sunday! Please note: We may not vest once the weather turns hot, so please wear our summer choir "uniform" - white blouse or shirt, black (or very dark) shorts, pants or skirt and dark-ish shoes (sandals are fine!).

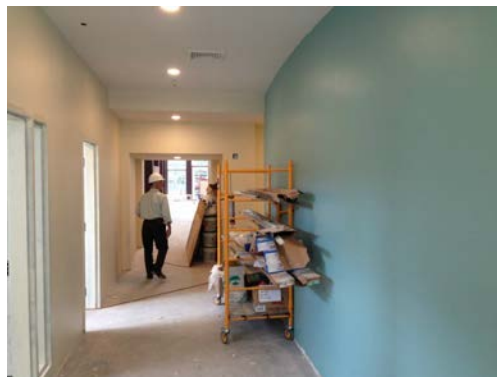


---

## August 20, 2017 - Eleventh Sunday after Pentecost

Almighty God, you have given your only Son to be for us a sacrifice for sin, and also an example of godly life: Give us grace to receive thankfully the fruits of his redeeming work, and to follow daily in the blessed steps of his most holy life; through Jesus Christ your Son our Lord, who lives and reigns with you and the Holy Spirit, one God, now and for ever. **Amen.**

For the text of this Sunday's readings, [please click here](#):



[Isaiah 56:1,6-8 ~ Psalm 67 ~ Romans 11:1-2a,29-32 ~ Matthew 15:21-28](#)

This week from the Episcopal Church: [St. Bartholomew the Apostle](#). [Click here](#) for the latest from the Episcopal News Service. And for current news from the Episcopal Diocese of Rhode Island, [please click here](#).

Would you like to add someone to the prayer list? [Please click here](#) to submit a name, or call the church office at (401) 331-3225. Names are kept on the list for a month, and can be renewed at any time. Those received by Wednesday will appear in the same week's bulletin.

---

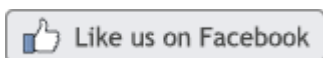
---

## Connect with Grace

[Grace Church Website](#)

[This Sunday's Readings](#)

[Listen to Recent Sermons](#)



**Support Grace Church  
While You Shop**  
When you shop at [smile.amazon.com](https://smile.amazon.com), Amazon donates.  
[Go to smile.amazon.com](https://smile.amazon.com)  
amazon**smile**

---

---

 **GRACE  
EPISCOPAL  
CHURCH**

300 Westminster Street  
Providence, RI 02903  
(401) 331-3225  
[info@gracepvd.org](mailto:info@gracepvd.org)  
[www.gracechurchprovidence.org](http://www.gracechurchprovidence.org)

*The Mission of Grace Church is to build, by the grace of God, a loving and joyful community which lives the gospel through worship, proclamation and service to each other, to downtown Providence, and beyond.*