

Weekly E-News from Grace Episcopal Church

March 6, 2020

## Spotlight on Grace: Lenten Worship Offerings

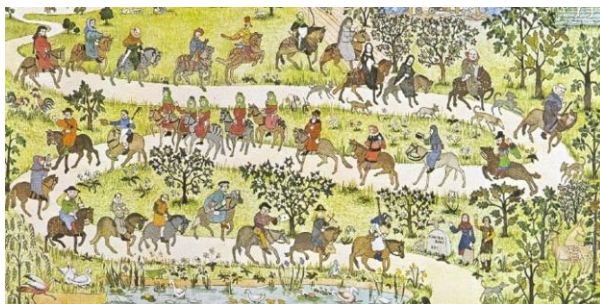
Grace Church is offering two weekday worship options (in addition to the regular Wednesday Noon Eucharist) on Thursdays and Fridays during Lent, beginning Thursday, March 5th.

We will gather at 6:00 PM on Thursday evenings in the church around the Table Altar for prayer, scripture, Eucharist, and song.

Your Journey of Lent at  
Grace Church in Providence



This service will be contemplative in nature and feature music from the Celtic tradition, accompanied by our beautiful concert grand piano. We will be treated to homilies by a different lay preacher each week. Drake Douglas will preach on March 5.

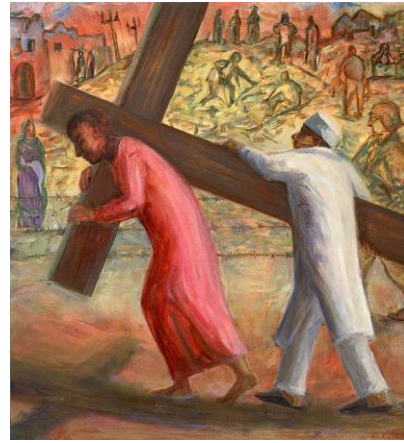


Following each Lenten Celtic Eucharist will be a light supper and brief presentation in The Pavilion. The first supper (March 5th) will be hosted by the Grace Church 20s/30s Group and the presenters will be Fr. Jonathan and Vince Edwards. They will speak briefly about their experiences at Canterbury Cathedral as part of our Virtual Lenten Pilgrimage to Canterbury facilitated

by Senior Warden, Adrienne Southgate. Fr. Jonathan will share his experience of taking a youth group on a walking pilgrimage from Dover to Canterbury a decade ago, and Vince will talk about being handed the key to Canterbury Cathedral for late-night organ practice!

Invite a friend into a warm, candlelit space and share your Lenten journey with others. The service will last about 45 minutes, and parking is available in the Grace Church lot.

New this year for Lent is the Way of the Cross (or more commonly referred to as Stations of the Cross) liturgy at 12 Noon on Fridays. This short service lasts about 25 minutes and features participants walking to various points throughout the church to commemorate Christ's journey to Mount Calvary and his crucifixion. Each station is a painting representing the 14 stops Christ made while carrying his cross. New York artist Gwyneth Leech has graciously allowed us to use printed copies of her Stations of the Cross which were commissioned by St. Paul's-on-the-Green in Norwalk, CT in 2005.



For information on all of our Lenten offerings, please find the brochure for Lent, Holy Week and Easter located in the back of the church.

## Virtual Lenten Pilgrimage Map: Week 2


Each week in Lent, we will issue a map depicting the week's virtual Lenten journey, showing what King Henry II and his retinue might have seen in the 12th century along the way on their 244-mile penitential pilgrimage from Southampton to Canterbury. Progress through the map is made by performing one or more of the instructions which appear in circles; if a particular task does not appeal to you, additional suggestions are given on each map. [Click here](#) to download the map.

*the goal is to accomplish at least one of these tasks per day, thus keeping Jesus and His teachings foremost in your heart*


**alternative or supplemental tasks**

- complete (or repeat) any previous task
- read the Reconciliation of a Penitent (p. 447 in TBCP)\*
- apologize to someone you think you may have hurt
- sit for 30 minutes & write your personal thoughts
- fast for 1 day
- catch up on your lagging phone calls & emails
- add a prayer to your devotions from p. 814-835 in TBCP\*
- create & complete your own special task to serve Jesus
- choose from the supplement suggestions on our website


(\*The Book of Common Prayer)



Even in the 1100's, the English landscape would have been dotted with old remains like this one.




An early path to Chichester.



Familiar sights for travelers in 12th century England, as they still are today.

**The Old Way Lenten Pilgrimage**

 **week 2 (3/2- 3/8)**

**Havant to Chichester to Arundel ... 36 miles**

Chichester Cathedral dates from 1108. After it burned in an 1187 fire, massive rebuilding - possibly by Walter of Coventry - occurred. It was reconsecrated in 1199.

Arundel Castle was built in 1067 by Roger de Montgomery, the cousin of William the Conqueror. It was built on a naturally defensible site overlooking the River Arun which, at that time, was navigable to the sea. The original castle was an earth and timber fortification, but within a few years, parts of it began to be rebuilt in stone. Today it is huge, ornate & spectacular.

**list 5 things to be grateful for this past week**

give up 1 thing you enjoy for a week


call a relative you don't usually talk with

give 1 hour of your time to a worthy cause


have a conversation with a stranger

thank a first responder

have a no-tech night



Chichester



Arundel

# Daylight Savings Time Reminder: Spring Forward!

To be sure you'll arrive at church at the right time, please move your clocks ahead one hour before going to sleep this Saturday night, March 7th.



---

## Upcoming Music at Grace

### Thursdays at Noon

On Thursday, March 5 at 12 Noon, Juan Carlos Rios Betancur, Director of Music at The Church of the Redeemer in Providence will offer a piano recital that will feature works by Paul Bowles, Isaac Albéniz, and Ernesto Lecuona. Juan is a talented pianist from Colombia, having just received his Doctorate of Musical Arts in Piano Performance from West Virginia University.



### Diocesan Choral Festival

On Saturday, March 7, Grace, St. Luke's, East Greenwich, St. John's, Newport, and St. Christopher's, Chatham will be hosting the Annual Diocesan Choral Festival at Grace Church. The guest director this year is Graeme McCullough, Organist & Director of Music at All Saints Episcopal Church, Worcester, M.A. Choristers and choir members from each of the three participating parishes will come together for a day of rehearsals with Graeme and then sing a service of Choral Evensong that evening at 5:00 PM. Music featured will be by composers Christopher Jennings, David Halls, Charles Wood, David Hogan, and Ivor Atkins. A reception will follow in The Pavilion. Please do join us for this wonderful annual collaboration between parishes of our diocese!



## Lenten Giving Cross

Beginning this Sunday, March 8, the Outreach Ministry at Grace Church invites you to bring diapers and baby wipes for our annual Lenten Cross Drive. These much-needed supplies will be donated to families served by [Children's Friend](#). The Lenten Cross will be placed in The Pavilion beginning March 8, and donated supplies can be placed there through Lent.

In prior years we've requested a broader range of goods, but Children's Friend informs that the particular need for diapers and wipes is substantial. Children's Friend promotes the well-being and healthy development of Rhode Island's most vulnerable young children. Thank you to all who may donate.



---

## This Week at Grace

### Weekly Worship Schedule:

Sunday 8:00am Spoken Holy Eucharist  
Sunday 10:00am Sung Holy Eucharist with Music  
Wednesday 12:00 Spoken Holy Eucharist

**Open Doors:** Your friendly docents are here to greet you every weekday from 11:00am to 2:00pm. Please encourage your friends or guests to come and visit Grace Church and see the new Pavilion at Grace.

### Wheelchair Access and Accessible Parking:

Please find convenient accessible in the Grace Church parking lot with access from Snow Street. The new wheelchair ramp connects directly from the lot, and you will enter through the new reception entrance of The Pavilion and into the church at ground level.

**Parking for Worship:** Free parking for Sunday worship is provided:

- 1.) in the lot directly across Snow Street from our lot, at the SW corner of Westminster and Snow; and
- 2.) In the Grace Church parking lot accessed via Snow Street. We ask your kind cooperation in reserving this lot, to the extent possible, for seniors and those with limited mobility.



---

## Events in The Pavilion:

# Brown University chapter of Camp Kesem

[The Brown University chapter of Camp Kesem](#) would like to thank Grace Church for sponsoring our upcoming fundraiser in The Pavilion at Grace with a reduced rental fee for your beautiful space.



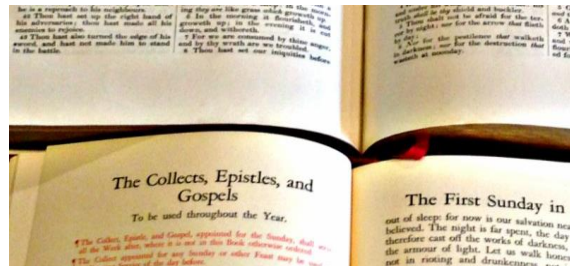
If you or someone you know has children affected by a parent's cancer, or you would like to support our cause or attend our gala fundraiser in The Pavilion on Saturday, March 14, we invite you to contact [brown@campkesem.org](mailto:brown@campkesem.org) for more information or [click here for tickets to the fundraiser](#).

Camp Kesem is a national non-profit organization that provides a free week of summer camp, as well as free year-round support services, for over 5 million children impacted by a parent's cancer. Our innovative and fun-filled programs provide children with peers who understand their unique needs, and create long-lasting impact.

---

## March 8, 2020 The Second Sunday in Lent

O God, whose glory it is always to have mercy: Be gracious to all who have gone astray from your ways, and bring them again with penitent hearts and steadfast faith to embrace and hold fast the unchangeable truth of your Word, Jesus Christ your Son; who with you and the Holy Spirit lives and reigns, one God, for ever and ever. *Amen.*



For the text of the readings for The Second Sunday in Lent, [please click here](#).

This week from the Episcopal Church: [Life Transformed: The Way of Love in Lent: Pray](#)

[Click here](#) for the latest from the Episcopal News Service. And for current news from the Episcopal Diocese of Rhode Island, [please click here](#).

Would you like to add someone to the prayer list? [Please click here](#) to submit a name, or call the church office at (401) 331-3225. Names are kept on the list for a month, and can be renewed at any time. Those received by Wednesday will appear in the same week's bulletin.

---