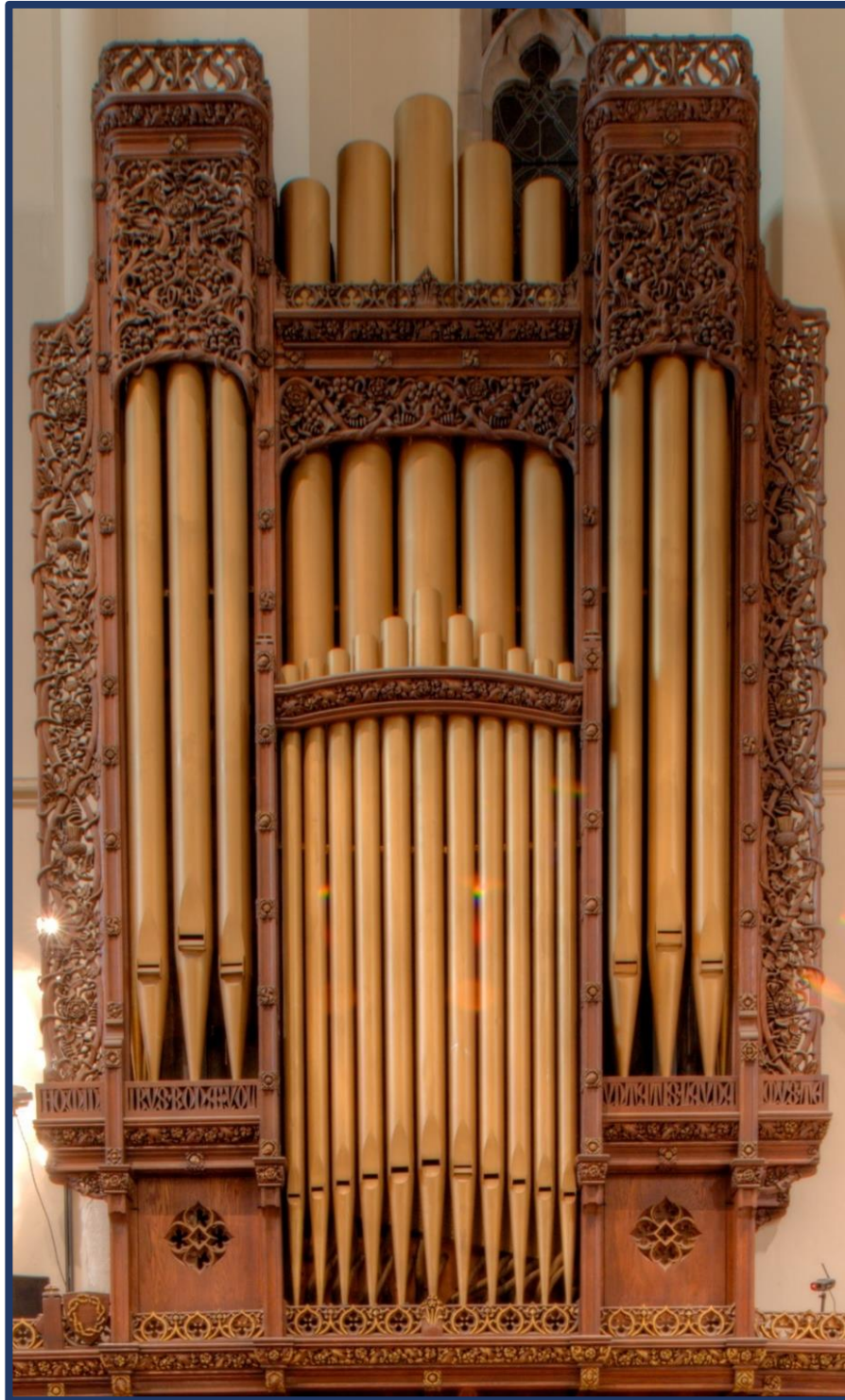


# THE ORGAN PROJECT



GRACE CHURCH  
IN PROVIDENCE

# THE ORGAN PROJECT

## GRACE CHURCH IN PROVIDENCE

*A brief history, and a plan for renovation and expansion.*

In the late 1950s – more than sixty years ago – Senior Warden Charles M. Smith wrote to Grace Church parishioners about the failing state of the pipe organs and the dire need to address those conditions. His letter outlined three considerations for the Vestry:

- The seriousness of the condition and the action required to correct it
- The possibility of spreading the work and large expense involved over several years
- The best means of providing the required funds to successfully undertake such a project



*The Gallery Case & Façade, designed by Hutchings Organ Co., Boston, 1886*

These questions are essentially the same ones asked by our current Vestry, as we determine the best approach for the restoration of the organs at Grace. We have the answers to the first two questions – a sound and creative plan for restoration, renovation, and expansion; and a clear understanding that a multi-phased approach over many years is not practical, neither financially nor from a usage standpoint. We now seek funding from generous individuals, foundations, or corporations (or from a combination of these) in order to return this venerable instrument to its former glory and honor the vision and legacy of generations of Rhode Islanders that have come before us.

We are proposing a two-phased approach for this project. **Phase I:** enlarges, restores, and renovates the Chancel organ, addresses some important issues with the Gallery organ, and provides for a new console. **Phase II:** would complete the restoration and renovation of the Gallery organ.

*Please continue reading for more detailed information on this very exciting and monumental musical project.*



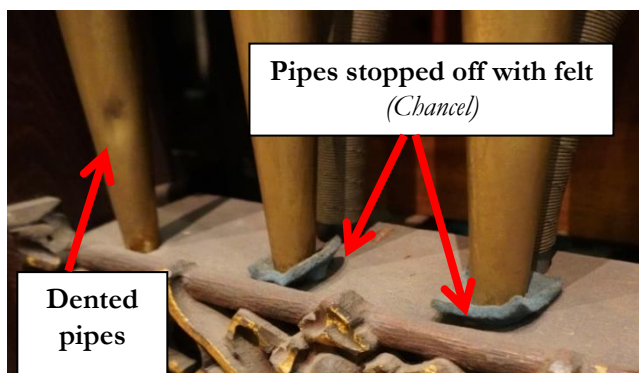
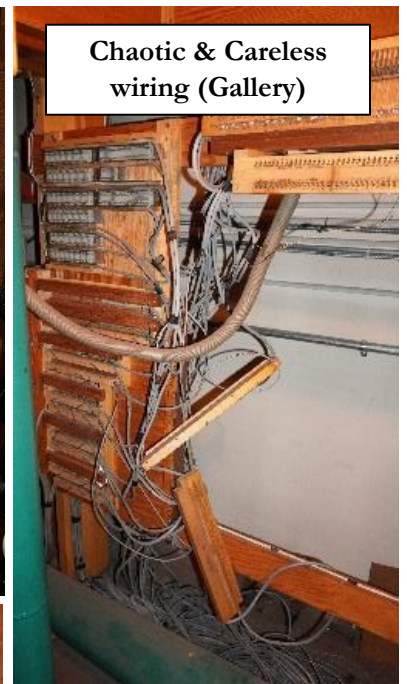
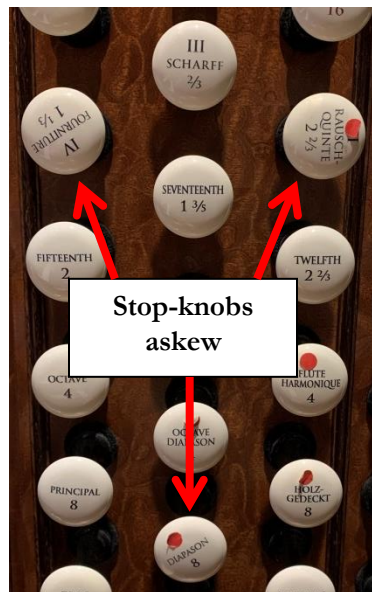
*The twin Chancel cases and façade, designed by Ralph Adams Cram, 1912.*



## THE ORGAN'S CURRENT CONDITION . . .

The current instrument – comprised of the front (Chancel) organ and back (Gallery) organ – is in desperate need of renovation and restoration and is currently unplayable. There are hundreds of dead notes, and ciphers – pipes that play on their own and won't stop – are frequent. The organ needs to be completely re-leathered; all the pipes need cleaning, and most need repair; the organ chambers need thorough cleaning; and much rewiring and additional chamber lighting is needed. While we are dealing with those types of issues, it is the ideal time to address any other shortcomings the organ may have tonally. This project will do just that. Finally, a new console is needed to control the entire organ. (In September 2023, a Hauptwerk Virtual Pipe Organ was installed in the chancel as an interim instrument to accompany the choirs and congregation while funds are being sought for this project. This temporary arrangement will allow the music program to continue its offerings, but as with most digital organs, it's overall capabilities and life-span is limited compared to a real pipe organ.)

*Please see the pictures below and on the back of this brochure for an inside peak into the organ's current condition. And do watch our three videos found at [www.gracechurchprovidence.org/organproject](http://www.gracechurchprovidence.org/organproject)*



**Pipes stopped off with felt**  
(Chancel)



# THE ORGAN PROJECT SUMMARY

## A BRIEF HISTORY

- 1845 – Henry Erben organ installed in the Gallery
- 1886 – Hutchings & Co. (Boston) organ installed in the Gallery including present case and façade
- 1904 – Organ action electrified and console moved downstairs to the chancel
- 1912 – New chancel built – Hutchings & Co. provided a small 2-manual organ for the new chancel
- 1923 – Casavant Frères, Ltée. builds large new 2-manual organ for the chancel
- 1959 – Casavant rebuilds the entire organ, including a new console – 103 ranks; 6122 pipes
- 2010 – A new console is installed by R.A. Colby, Inc. and 100 digital (electronic) voices added by Walker Technical Company
  - NB: *This last project was conceived and carried out by then-Music Director Mark Johnson as an alternative to restoring the pipe organ.*
- **2023** – The problems from previous decades have only multiplied, and the actual pipe organ is virtually unusable. In the meantime, Grace Church has: restored the exterior of the building to prevent water leakage; built The Pavilion, a state-of-the-art parish hall adjacent to the church, to be used for parish and community events; and renovated all other interior spaces that had suffered from water damage and decay over the years. And finally, our Music Program has grown to include the 40-member Grace Church Choir; 20 children involved in the Chorister program; a *Schola* to provide music for monthly Compline; and *Collegium Ancora*, a professional chamber choir in residence at Grace Church with its own schedule of concert performances.

## THE PROPOSED PROJECT

It is time that our once-glorious pipe organ be restored, renovated and expanded to be in effect the largest and most versatile organ in the state of Rhode Island, as well as a landmark instrument for the East Coast. We dream of an organ that is worthy of the magnificent historical building it will inhabit. We are currently seeking funding for this monumental project. The restored and expanded organ, when complete, would contain **112 ranks of pipes and just over 6700 individual pipes**, divided between Gallery and Chancel. **The historic Hutchings case of 1886 (gallery) and Ralph Adams Cram twin cases (chancel) would remain intact.** This would be a two-phase approach: First the Chancel organ, and second, the Gallery organ. The work will be done by Casavant Frères, Ltée. one of the oldest organ building firms in existence, and who built the organ in 1923 and again in 1959.

- **Highlights of the renovated and expanded organ (Phase I) will include:**
  - A new 4-manual state-of-the-art console to control the entire organ (both Gallery and Chancel)
  - A greatly expanded 4-manual Chancel organ, including a new Solo division
  - A copper hooded trumpet atop the Gallery case
  - A re-use of almost all existing pipework
  - Dispensing with nearly all digital (electronic) stops and corresponding speakers in the current cases
  - Restoration/repair of all existing components and pipes in the Chancel organ, and restoration/ repair of the 1886 Hutchings 32' Bourdon pipes, with the remainder awaiting “Phase II” of restoration.
- **Costs:** Phase I - \$1,700,000; Construction of new pipe chamber in Chancel - \$150,000; Endowment for future maintenance - \$150,000. Total Cost of Phase I - \$2,000,000. ***This could be a memorial project, naming the organ for a family member, or loved one.***

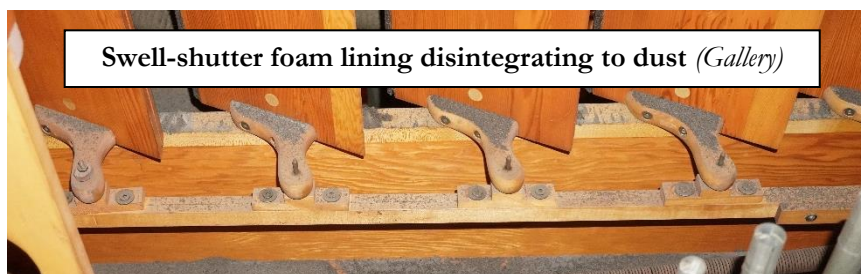
*For more information on the Grace Church Organ Project, please contact Vincent Edwards, Director of Music [vedwards@gracepvd.org](mailto:vedwards@gracepvd.org); 203-984-8943 (Mobile); 401-331-3225, x 4 (Office)*



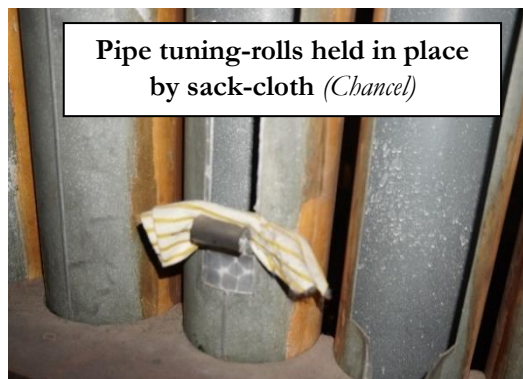
## MORE PHOTOS OF THE ORGAN'S CURRENT CONDITION . . .



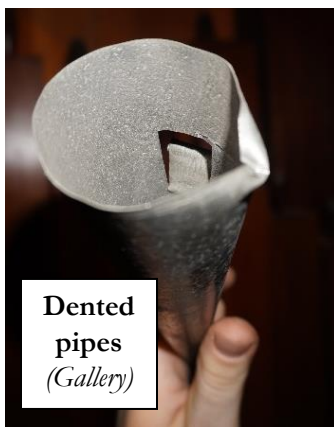
**Bent  
Pipes**  
(Chancel)



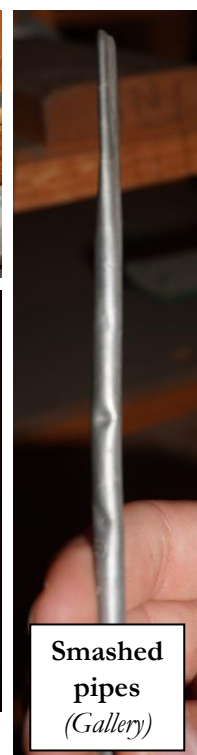
**Swell-shutter foam lining disintegrating to dust** (Gallery)



**Pipe tuning-rolls held in place  
by sack-cloth** (Chancel)



**Dented  
pipes**  
(Gallery)



**Smashed  
pipes**  
(Gallery)



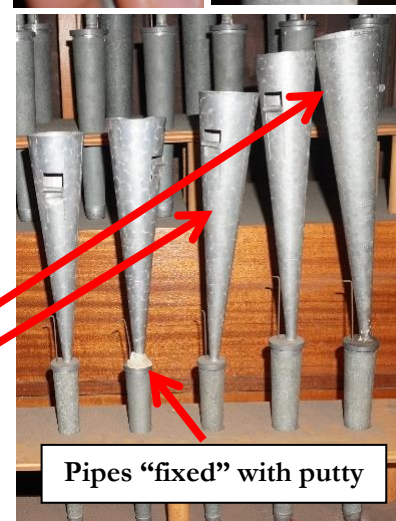
**Pipes collapsing  
in on themselves**  
(Chancel)



**Bent Pipes  
& Decades of Dust**  
(Chancel)



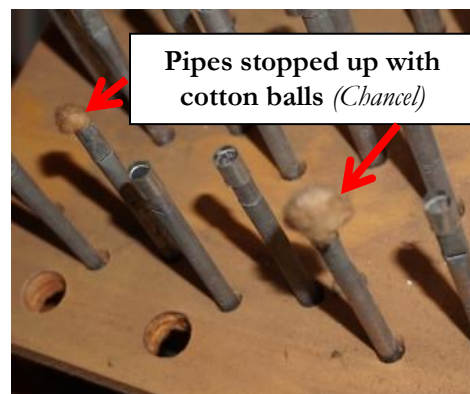
**Bent pipes**  
(Gallery)



**Pipes "fixed" with putty**



**Cardboard used to  
stop reservoirs  
from leaking**  
(Gallery)



**Pipes stopped up with  
cotton balls** (Chancel)



**Chaotic  
wiring**  
(Chancel)

*For informative and descriptive videos  
on the Grace Church organs and their current condition,  
please visit: [www.gracechurchprovidence.org/organproject](http://www.gracechurchprovidence.org/organproject)  
or scan the QR Code to the right!*



# PROPOSED SPECIFICATION (STOP LIST)

UPDATED 2023

## Chancel Organ, Phase I

### Chancel Great (II)

**10 ranks; 598 pipes**

16' Bourdon	61 Pipes, Quintaton rescaled/revoiced
8' First Diapason	61 pipes
8' Principal	Choir
8' Chimney Flute	61 pipes, Holzgedackt repacked/revoiced
4' Octave	61 pipes
4' Spire Flute	61 pipes, new
2' Super Octiave	61 pipes, new
III-IV Mixture	232 pipes, new
16' Double Trumpet	Swell
8' Tuba Mirabilis	Solo
4' Tuba Mirabilis	Solo
8' Cornopeon	Swell
8' Festival Trumpet	Gallery Great
Chimes	Digital
Great 16', Unison Off, Great 4'	

### Chancel Swell (III)

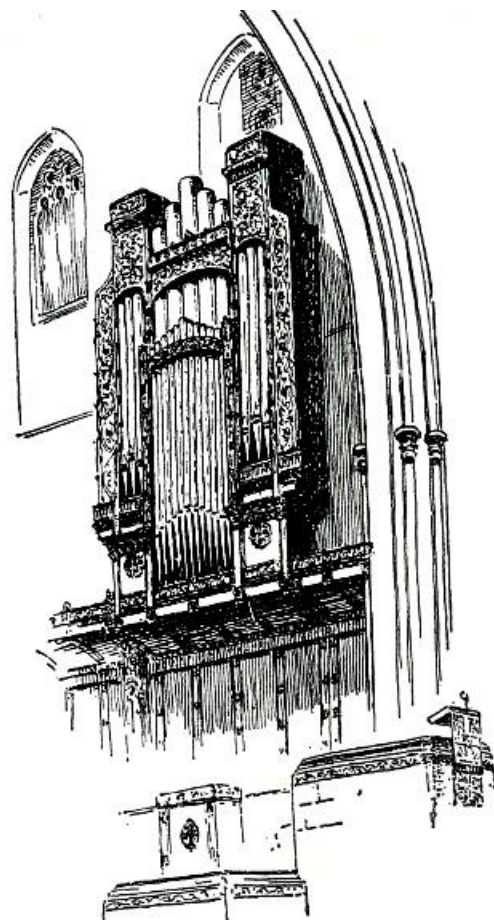
**19 ranks; 1,227 pipes (enclosed)**

16' Lieblich Gedeckt	68 pipes
8' Diapason	68 pipes
8' Bourdon	68 pipes
8' Viole de Gambe	68 pipes
8' Voix Céleste	61 pipes
4' Octave	68 pipes
4' Harmonic Flute	68 pipes
2 2/3' Nazard	61 pipes, new
2' Piccolo	61 pipes, new
1 3/5' Tierce	61 pipes, new
IV Plein Jeu	244 pipes, new
16' Double Trumpet	61 pipes, new
8' Trompette	68 pipes, new
8' Cornopeon	12 pipes, extension Double Trumpet
8' Oboe	68 pipes, new
4' Clarion	61 pipes, former Swell Trompette
8' Vox Humana	61 pipes, former Gallery Swell
Tremulant	
Swell 16', Unison Off, Swell 4'	

### Chancel Choir (I)

**4 ranks; 236 pipes (unenclosed)**

8' Principal	61 pipes
8' Erzähler	Solo
8' Erzähler Celeste	Solo
8' Harmonic Flute	Solo
8' Stopped Flute	29 pipes, 1-32 in common with Pedal Subbass
4' Octave	61 pipes, new



4' Stopped Flute	<i>12 pipes, extension of Stopped Flute 8'</i>
2' Super Octave	<i>12 pipes, extension of Octave 4'</i>
8' Cromorne	<i>61 pipes, from Gallery Choir</i>
8' Festival Trumpet	<i>Gallery Great</i>
8' Tuba Mirabilis	<i>Solo</i>
8' Cornopeon	<i>Swell</i>
8' French Horn	<i>Solo</i>
8' Clarinet	<i>Solo</i>
Tremulant	
Zimbelstern	
Choir 16', Unison Off, Choir 4'	

#### **Chancel Solo (IV)**

***8 Ranks; 536 pipes, located in new chamber, south Chancel (enclosed)***

8' Viola Pomposa	<i>61 pipes, former Chancel Choir</i>
8' Viola Celeste	<i>61 pipes, new</i>
8' Erzähler	<i>61 pipes, former Chancel Choir</i>
8' Erzähler Celeste	<i>61 pipes, former Chancel Choir</i>
8' Harmonic Flute	<i>61 pipes, new</i>
4' Violina	<i>12 pipes, extension Viola Pomposa</i>
4' Concert Flute	<i>12 pipes, extension Harmonic Flute</i>
16' Clarinet	<i>12 pipes, extension of Clarinet</i>
8' French Horn	<i>61 pipes, new</i>
8' Clarinet	<i>61 pipes, existing Skinner pipework</i>
Tremulant	
Solo 16', Unison Off, Solo 4'	
16' Tuba Magna	<i>From Tenor C, extension of Tuba Mirabilis</i>
8' Tuba Mirabilis	<i>61 pipes, new</i>
8' Festival Trumpet	<i>Gallery Great</i>
4' Tuba Clarion	<i>12 pipes, extension of Tuba Mirabilis</i>
Harp	<i>61 notes</i>
Celesta	<i>61 notes</i>

#### **Chancel Pedal**

***2 ranks; 112 pipes***

32' Soubasse	<i>Gallery</i>	32' Ophicleide	<i>Digital</i>
32' Violone	<i>32 notes</i>	16' Tuba Magna	<i>12 pipes, enclosed with Solo</i>
16' Diapason	<i>32 pipes</i>	16' Posaune	<i>Digital</i>
16' Subbass	<i>32 pipes</i>	16' Double Trumpet	<i>Swell</i>
16' Contrabass	<i>32 notes</i>	16' Clarinet	<i>Solo</i>
16' Bourdon	<i>Great</i>	8' Tuba Mirabilis	<i>Solo</i>
16' Lieblich Gedeckt	<i>Swell</i>	8' Festival Trumpet	<i>Gallery Great</i>
10 2/3' Quint	<i>Derived</i>	8' Cornopeon	<i>Swell</i>
8' Octave	<i>12 pipes, ext. Diapason</i>	4' Tuba Clarion	<i>Solo</i>
8' Principal	<i>Choir</i>	4' Clarion	<i>From Swell Cornopeon 8'</i>
8' Bourdon	<i>12 pipes, ext. Subbass</i>	4' Clarinet	<i>From Solo</i>
8' Gedeckt	<i>Swell</i>		
4' Super Octave	<i>12 pipes, ext. Octave 8</i>		
4' Harmonic Flute	<i>Solo</i>		



## Gallery Organ – Primarily Phase II, with some exceptions \*

<b>Gallery Great (II)</b>	<b><i>22 ranks; 1,182 pipes</i></b>
16' Sub Principal	<i>61 pipes</i>
8' Principal	<i>61 pipes</i>
8' Doppelflute	<i>61 pipes, new - prepared</i>
8' Hohlflöte	<i>61 pipes</i>
8' Violoncello	<i>61 pipes</i>
8' Dulcet	<i>61 pipes, renamed from Erzähler</i>
4' Octave	<i>61 pipes</i>
4' Flute Couverte	<i>61 pipes</i>
2 2/3' Octave Quinte	<i>61 pipes</i>
2' Super Octave	<i>61 pipes</i>
Cornet III-V	<i>267 pipes</i>
Fourniture IV	<i>244 pipes</i>
Scharf III	<i>183 pipes</i>
8' Trumpet	<i>61 pipes, new – prepared</i>
4' Clarion	<i>61 pipes, new - prepared</i>
8' Festival Trumpet *	<i>61 pipes, copper/ hooded on top of case, new</i>
Chimes	<i>21 Tubes</i>
Great 16', Unison Off, Great 4'	

<b>Gallery Swell (III)</b>	<b><i>20 ranks; 1,304 pipes (enclosed)</i></b>
16' Bourdon	<i>68 pipes</i>
8' Principal	<i>68 pipes</i>
8' Salicional	<i>68 pipes</i>
8' Voix Celeste	<i>61 pipes</i>
8' Spitz Flute	<i>68 pipes</i>
8' Flute Céleste	<i>61 pipes</i>
8' Stopped Diapason	<i>68 pipes</i>
4' Principal	<i>68 pipes</i>
4' Flute Octaviant	<i>68 pipes</i>
2' Flautino	<i>61 pipes</i>
Plein Jeu V	<i>305 pipes, new or revoiced</i>
16' Posaune	<i>68 pipes</i>
8' Trumpet	<i>68 pipes</i>
8' Oboe	<i>68 pipes</i>
8' Vox Humana	<i>68 pipes</i>
4' Clarion	<i>68 pipes</i>
Tremulant	
Swell 16', Unison Off, Swell 4'	

<b>Gallery Choir (I)</b>	<b><i>15 ranks; 978 pipes (enclosed)</i></b>		
16' Gemshorn	<i>68 pipes</i>	4' Prestant	<i>68 pipes</i>
8' Geigen Principal	<i>68 pipes</i>	Sesquialtera II	<i>122 pipes</i>
8' Concert Flute	<i>68 pipes</i>	Mixture III	<i>183 pipes</i>
8' Gedeckt *	<i>68 pipes, new, replaces Quintadena</i>	8' English Horn *	<i>68 pipes, from Chancel</i>
8' Dulciana	<i>68 pipes</i>	8' Festival Trumpet	<i>Gallery Great</i>
8' Unda Maris	<i>61 pipes</i>	Tremulant	
2' Flageolet	<i>68 pipes</i>	Choir 16', Unison Off, Choir 4'	
4' Koppelflöte	<i>68 pipes</i>		



<b>Gallery Pedal</b>	<b>12 ranks; 456 pipes</b>
32' Soubasse *	<i>12 pipes, renamed from Contra Bourdon</i>
16' Open Wood *	<i>32 pipes</i>
16' Sub Principal	<i>Great</i>
16' Violone	<i>32 pipes</i>
16' Soubasse	<i>32 pipes</i>
16' Bourdon	<i>Swell</i>
16' Gemshorn	<i>Choir</i>
8' Principal	<i>32 pipes</i>
8' Violoncello	<i>12 pipes</i>
8' Rohrbordun	<i>32 pipes</i>
5 1/3' Octave Quint	<i>32 pipes</i>
4' Choralbass	<i>12 pipes</i>
4' Rohrflöte	<i>12 pipes</i>
2' Waldflöte	<i>32 pipes</i>
Mixture IV	<i>128 pipes</i>
32' Contra Bombarde	<i>12 pipes, new, prepared for</i>
32' Contra Posaune	<i>32 notes</i>
16' Bombarde	<i>32 pipes</i>
16' Posaune	<i>Swell</i>
8' Trumpet	<i>12 pipes</i>
4' Clarion	<i>12 pipes</i>
8' Festival Trumpet	<i>Great</i>

**Chancel:** 43 ranks; 2,709 pipes

**Gallery:** 69 ranks; 4,034 pipes (*plus three prepared stops and one 12-pipe extension*)

**Total:** 112 ranks; 6,743 pipes



*An example of a potential new Chancel console to control the entire organ.*

## Phase II Project – Restoration & Rebuilding of the Gallery Organ



The Gallery (or “back”) Organ will be fully controllable by the new, four-manual console in the Chancel. **At the completion of Phase I, the Gallery Organ will play but in its current condition.** The only exceptions are the few specific elements of the Gallery Organ that will be addressed in Phase I. Our dream, of course, is to restore the Gallery Organ as well, including adding a three-manual console in the gallery that will play the gallery organ independently. This would make for exciting musical possibilities and create an unmatched “organ experience” in the Festival, and for that matter, all of New England.

*Cost information for completing Phase II may be obtained from the Director of Music.*





*An example of a potential three-manual console in the Gallery, to control the Gallery organ only.*

*For informative and descriptive videos  
on the Grace Church organs and their current condition,  
please visit: [www.gracechurchprovidence.org/organproject](http://www.gracechurchprovidence.org/organproject)  
or scan the QR Code below!*


**SCAN ME**




**GRACE CHURCH IN PROVIDENCE**


300 Westminster Street • Providence • RI • 02903

401-331-3225 • [www.GraceChurchProvidence.org](http://www.GraceChurchProvidence.org)

 @GraceChurchProvidence

 [youtube.com/c/GraceChurchinProvidence](https://youtube.com/c/GraceChurchinProvidence)

 @GraceChurchPVD

 @GraceChurchProvidence